

SCHEMATIC AND SMALL PARTS

# STUMPJUMPER ALLOY

Mountain Bike



# CONTENTS

---

|   |           |
|---|-----------|
| <b>1. SYMBOLS LEGEND</b> .....                              | <b>1</b>  |
| <b>2. GENERAL INFORMATION</b> .....                         | <b>1</b>  |
| 2.1. REQUIRED TOOLS .....                                   | 1         |
| 2.2. WEIGHT LIMITS .....                                    | 1         |
| 2.3. COMPONENT COMPATIBILITY .....                          | 2         |
| 2.4. SEATPOST MIN / MAX INSERTION .....                     | 2         |
| 2.5. COIL SHOCK SPRING RATE CHART .....                     | 2         |
| 2.6. FOX AIR SHOCK WITH SPECIALIZED GENIE TECH .....        | 2         |
| <b>3. GEOMETRY</b> .....                                    | <b>3</b>  |
| 3.1. ADJUSTABLE GEOMETRY CHANGES .....                      | 5         |
| <b>4. SPECIFICATIONS</b> .....                              | <b>6</b>  |
| <b>5. REAR TRIANGLE SPECIFICATIONS</b> .....                | <b>9</b>  |
| 5.1. BEARING AND SPACER SPECIFICATIONS .....                | 10        |
| 5.2. BOLT, AXLE, WASHER, AND FLIP CHIP SPECIFICATIONS ..... | 12        |
| <b>6. CABLE ROUTING</b> .....                               | <b>13</b> |
| <b>7. REPLACEMENT PARTS AND ACCESSORIES</b> .....           | <b>15</b> |

**SPECIALIZED BICYCLE COMPONENTS** | 15130 Concord Circle, Morgan Hill, CA 95037 (408) 779-6229

0000208250\_SC\_R2 10/24

We may occasionally issue updates and addenda to this document. Please periodically check [www.specialized.com](http://www.specialized.com) or contact Rider Care to make sure you have the latest information. 877-808-8154

## 1. SYMBOLS LEGEND



**WARNING!** The combination of this symbol and word indicates a potentially hazardous situation that, if not avoided, could result in serious injury or death. Many of the Warnings say, "you may lose control and fall." Because any fall can result in serious injury or even death, we do not always repeat the warning of possible injury or death.



**CAUTION:** The combination of the safety alert symbol and the word CAUTION indicates a potentially hazardous situation that, if not avoided, may result in minor or moderate injury, or is an alert against unsafe practices.

The word CAUTION used without the safety alert symbol indicates a situation that, if not avoided, could result in serious damage to the bicycle or the voiding of your warranty.



This symbol alerts the reader to information that is particularly important.



Tech tips are useful tips and tricks regarding installation and use.



This symbol means that high-quality grease should be applied as illustrated.



This symbol means that high-quality carbon assembly paste should be applied as illustrated.



This symbol means a high-quality blue threadlocker should be applied as illustrated.



This symbol means a high-quality bearing retaining compound should be applied as illustrated.



This symbol indicates the length of time required for something to fully cure.

## 2. GENERAL INFORMATION

### 2.1. REQUIRED TOOLS

| TOOL                                    | SIZE/SPEC                      |
|---|--------------------------------|
| Torque wrench                           | 0 - 25 Nm / 0 - 221 in-lbf     |
| Hex bits / sockets                      | 2.5 mm, 3 mm, 4 mm, 6 mm, 8 mm |
| Torx keys                               | T25                            |
| Hex keys                                | 2.5 mm, 4 mm, 5 mm             |
| Cable / housing cutters                 | -                              |
| Pick set                                | -                              |
| High-quality grease                     | -                              |
| High-quality bearing retaining compound | Loctite 603                    |
| High-quality blue threadlocker          | Loctite 243                    |
| High pressure shock pump                | -                              |

### 2.2. WEIGHT LIMITS

| MODEL             | CARGO WEIGHT LIMIT (kg / lb) |       | STRUCTURAL WEIGHT LIMIT (kg / lb) |
|-------------------|------------------------------|-------|-----------------------------------|
|                   | REAR                         | FRONT |                                   |
| Stumpjumper Alloy | 2.3 / 5                      | 0 / 0 | 136 / 300                         |

## 2.3. COMPONENT COMPATIBILITY

| COMPONENT                 | COMPATIBLE SIZES/SPECS                         |
|---------------------------|--|
| Seat collar diameter      | 38.6 mm  |
| Seatpost diameter         | 34.9 mm  |
| Rear tire max             | 29 x 2.4 in                                    |
| Bottom bracket shell      | 73 mm [BSA threaded]                           |
| Rear wheel travel         | 145 mm   |
| Shock length / stroke     | S1: 210 mm / 52.5 mm<br>S2-6: 210 mm / 55 mm   |
| Recommended shock sag     | 16 mm (30%)                                    |
| Min / max fork travel     | S1: 140 mm / 150 mm<br>S2-6: 150 mm / 160 mm   |
| Min chainring             | 30 t   |
| Max chainring             | 34 t   |
| Min / max front chainline | 55 mm only                                     |
| Chainguide tabs           | ISCG-05  |
| Min / max front rotor     | Fork manufacturer's guidelines                 |
| Min / max rear rotor      | S1-2: 180 mm / 220 mm<br>S3-6: 200 mm / 220 mm |
| Bottle clearance          | 1 bottle                                       |

## 2.4. SEATPOST MIN / MAX INSERTION

| FRAME                  | S1  | S2  | S3  | S4  | S5  | S6  |
|------------------------|-----|-----|-----|-----|-----|-----|
| Minimum insertion (mm) | 80  |     |     |     |     |     |
| Maximum insertion (mm) | 245 | 245 | 255 | 255 | 285 | 285 |

## 2.5. COIL SHOCK SPRING RATE CHART

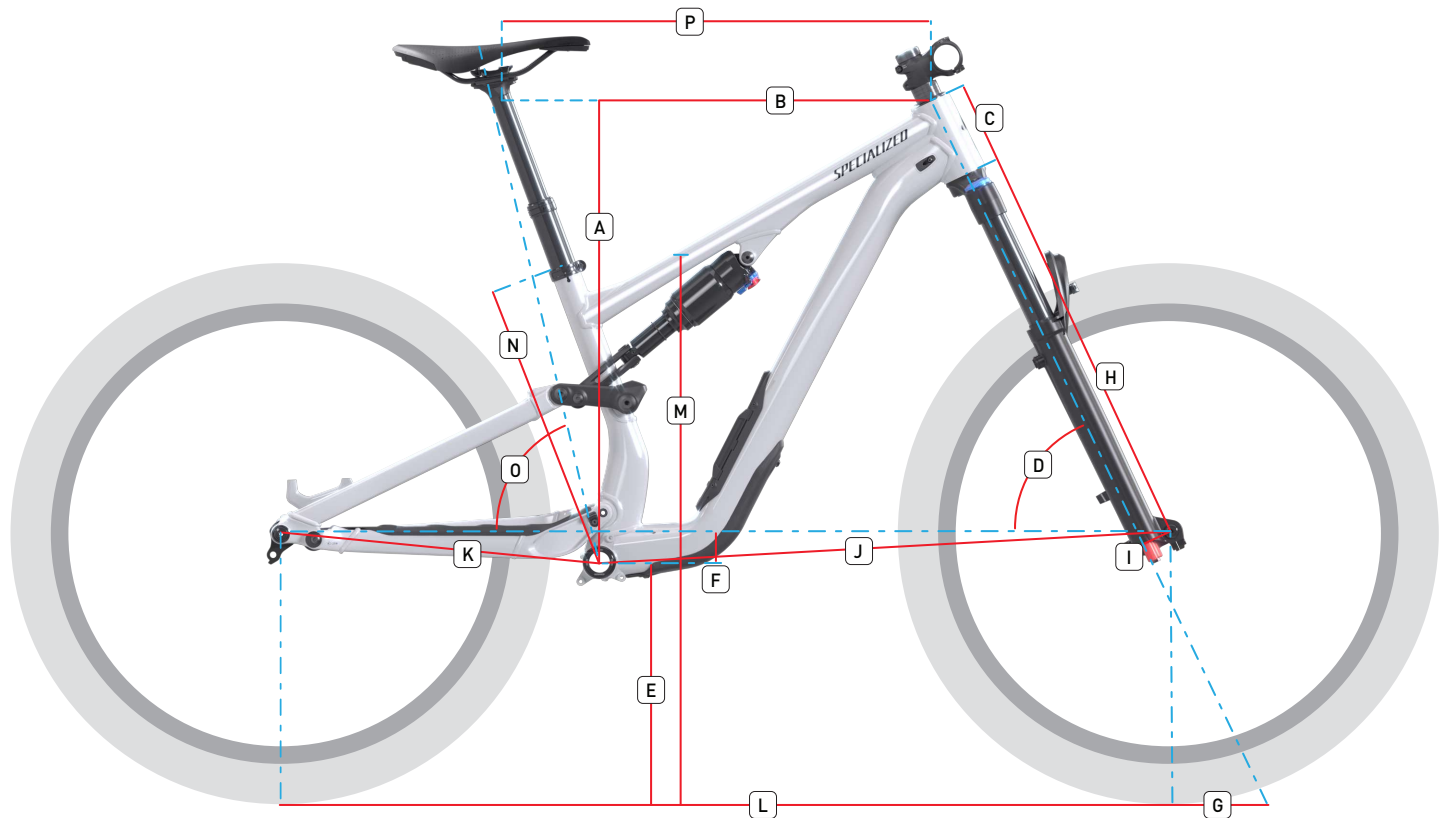
| RIDER WEIGHT |         | SPRING RATE<br>lb |
|--------------|---------|-------------------|
| kg           | lb      |                   |
| 41-50        | 90-110  | 250-300           |
| 54-59        | 120-130 | 300-350           |
| 63-68        | 140-150 | 350-400           |
| 73-77        | 160-170 | 400-450           |
| 82-86        | 180-190 | 450-500           |
| 91-95        | 200-210 | 500-550           |
| 100-104      | 220-230 | 550-600           |

## 2.6. FOX AIR SHOCK WITH SPECIALIZED GENIE TECH

| COMPONENT                      | COMPATIBLE AMOUNTS/SIZES                              |
|--------------------------------|---|
| Min / max outer sleeve spacers | 0 / 4   |
| Min / max eyelet spacer        | 0 / 1 (0.2 inch <sup>3</sup> or 0.4 in <sup>3</sup> ) |

### 3. GEOMETRY

---



|          |   | STUMPJUMPER ALLOY (150 mm fork) |       |       |       |       |       | STUMPJUMPER ALLOY (160 mm fork) |       |       |       |       |       |
|----------|---|---------------------------------|-------|-------|-------|-------|-------|---------------------------------|-------|-------|-------|-------|-------|
|          |   | S1*                             | S2    | S3    | S4    | S5    | S6    | S1**                            | S2    | S3    | S4    | S5    | S6    |
| <b>A</b> | <b>Stack (mm)</b>                       | 608                             | 618   | 627   | 640   | 654   | 667   | -                               | 621   | 630   | 644   | 657   | 671   |
| <b>B</b> | <b>Reach (mm)</b>                       | 400                             | 425   | 450   | 475   | 500   | 530   | -                               | 420   | 445   | 470   | 495   | 525   |
| <b>C</b> | <b>Head tube length (mm)</b>            | 95                              | 100   | 110   | 125   | 140   | 155   | -                               | 100   | 110   | 125   | 140   | 155   |
| <b>D</b> | <b>Head tube angle (°)</b>              | 64.5                            | 64.5  | 64.5  | 64.5  | 64.5  | 64.5  | -                               | 64.0  | 64.0  | 64.0  | 64.0  | 64.0  |
| <b>E</b> | <b>BB height (mm)</b>                   | 334                             | 337   | 337   | 337   | 337   | 337   | -                               | 340   | 340   | 340   | 340   | 340   |
| <b>F</b> | <b>BB drop (mm)</b>                     | 41                              | 38    | 38    | 38    | 38    | 38    | -                               | 35    | 35    | 35    | 35    | 35    |
| <b>G</b> | <b>Trail (mm)</b>                       | 129                             | 130   | 130   | 130   | 130   | 130   | -                               | 134   | 134   | 134   | 134   | 134   |
| <b>H</b> | <b>Fork length: full (mm)</b>           | 551                             | 561   | 561   | 561   | 561   | 561   | -                               | 573   | 573   | 573   | 573   | 573   |
| <b>I</b> | <b>Fork rake offset (mm)</b>            | 44                              | 44    | 44    | 44    | 44    | 44    | -                               | 44    | 44    | 44    | 44    | 44    |
| <b>J</b> | <b>Front center (mm)</b>                | 720                             | 751   | 780   | 812   | 843   | 879   | -                               | 755   | 785   | 816   | 848   | 884   |
| <b>K</b> | <b>Chainstay length (mm)</b>            | 430                             | 432   | 435   | 435   | 445   | 445   | -                               | 432   | 432   | 432   | 442   | 442   |
| <b>L</b> | <b>Wheelbase (mm)</b>                   | 1,149                           | 1,181 | 1,213 | 1,244 | 1,285 | 1,322 | -                               | 1,186 | 1,216 | 1,247 | 1,288 | 1,325 |
| <b>M</b> | <b>Standover height (mm)</b>            | 738                             | 751   | 745   | 745   | 745   | 751   | -                               | 751   | 745   | 745   | 745   | 751   |
| <b>N</b> | <b>Seat tube length (mm)</b>            | 385                             | 385   | 405   | 425   | 445   | 465   | -                               | 385   | 405   | 425   | 445   | 465   |
| <b>O</b> | <b>Seat tube angle (°)</b>              | 77.0                            | 76.5  | 77.0  | 76.9  | 77.3  | 77.6  | -                               | 76.0  | 76.5  | 76.5  | 76.8  | 77.2  |
| <b>P</b> | <b>Top tube length, horizontal (mm)</b> | 541                             | 573   | 595   | 624   | 647   | 677   | -                               | 574   | 596   | 625   | 649   | 678   |
|          | <b>Crank length (mm)</b>                | 165                             | 165   | 165   | 170   | 170   | 170   | -                               | 165   | 165   | 170   | 170   | 170   |
|          | <b>Handlebar width (mm)</b>             | 780                             | 780   | 800   | 800   | 800   | 800   | -                               | 780   | 800   | 800   | 800   | 800   |
|          | <b>Saddle width (mm)</b>                | 155                             | 155   | 143   | 143   | 143   | 143   | -                               | 155   | 143   | 143   | 143   | 143   |

The above table shows the standard geometry for the bicycles as shipped. Visit [www.specialized.com](http://www.specialized.com) for all possible geometry configurations.

\*Size S1 bicycles ship factory standard with a 140 mm travel fork. \*\*Size S1 bicycles are not compatible with a 160 mm travel fork.



S1 and S2 bicycles are only compatible with a mixed wheel setup, S3-S6 are compatible with a 29 inch or mixed wheel setup.

### 3.1. ADJUSTABLE GEOMETRY CHANGES



HIGH



LOW

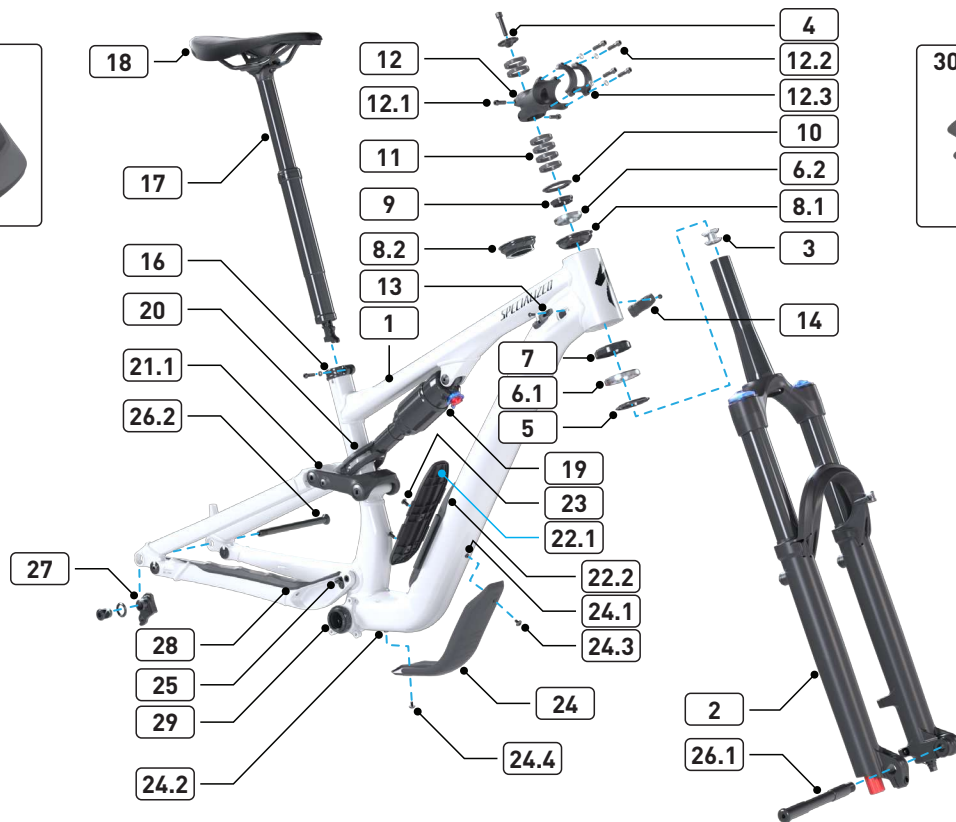


| ADJUSTABLE GEOMETRY CHANGES |                  |                       |                |
|-----------------------------|------------------|-----------------------|----------------|
| ADJUSTMENT POINT            | CHAINSTAY LENGTH | BOTTOM BRACKET HEIGHT | HEADTUBE ANGLE |
| Horst pivot (high)          | +/- 0 mm         | +/- 0 mm              | +/- 0°         |
| Horst pivot (low)           | + 6 mm           | - 7 mm                | - 0.5°         |
| Headset cup (0°)            | +/- 0 mm         | +/- 0 mm              | 64.5°          |
| Headset cup (-1°)           | +/- 0 mm         | - 2 mm                | 63.5°          |
| Headset cup (+1°)           | +/- 0 mm         | + 1 mm                | 65.5°          |



Your bicycle ships factory standard with the Horst pivot flip chips in high position, and a 0° headset cup installed.

## 4. SPECIFICATIONS





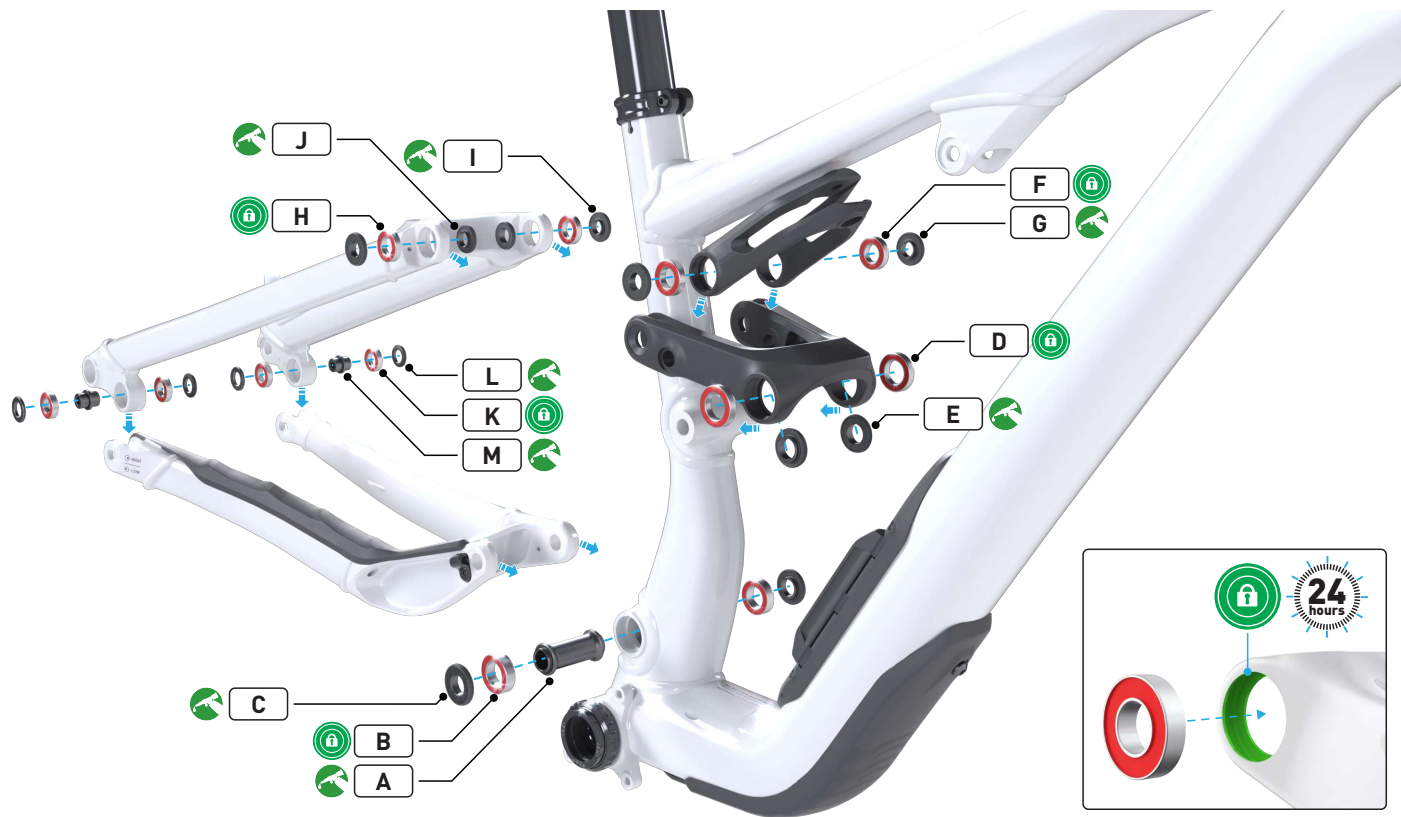
|    | DESCRIPTION                               |   | TOOL SIZE  | TORQUE  |        |
|----|---|---|------------|---|--------|
|    |   |   |            | Nm  | in-lbf |
| 1  | Frame                                     |   | -          | -   | -      |
| 2  | Fork                                      |   | -          | -   | -      |
| 3  | Star nut                                  |   | -          | -   | -      |
| 4  | Top cap and compression bolt              |   | 4 mm hex   | -   | -      |
| 5  | Crown race                                |   | -          | -   | -      |
| 6  | Headset bearing                           | 1. Lower 1.5" (52 mm OD x 40 mm ID x 7 mm, 45° x 45°)       | -          | -   | -      |
|    |   | 2. Upper 1-1/8" (41.8 mm OD x 30.5 mm ID x 7 mm, 45° x 45°) | -          | -   | -      |
| 7  | Lower headset cup                         |   | -          | -   | -      |
| 8  | Headset cups                              | 1. [0°] headset cup   | -          | -   | -      |
|    |   | 2. [+/-1°] headset cup                                      | -          | -   | -      |
| 9  | Compression ring                          |   | -          | -   | -      |
| 10 | Headset cover                             |   | -          | -   | -      |
| 11 | Headset spacers (34 OD x 28.6 ID x 5 mm)  |   | -          | -   | -      |
| 12 | Stem                                      | 1. Steerer bolts  | -          | Torque to the specification stated on the stem. |        |
|    |   | 2. Faceplate bolts  | -          |   |        |
|    |   | 3. Faceplate  | -          | -   | -      |
| 13 | ICR guide (single cable) (drive side)     |   | 2.5 mm hex | 1.5   | 13     |
| 14 | ICR guide (double cable) (non-drive side) |   | 2.5 mm hex | 1.5   | 13     |
| 15 | Handlebar (not shown)                     |   | -          | -   | -      |
| 16 | Seatpost clamp (38.6 mm)                  |   | 4 mm hex   | 6.2   | 55     |
| 17 | Seatpost                                  |   | -          | -   | -      |

|           |  |  |            |     |     |
|-----------|--|--|------------|-----|-----|
| <b>18</b> | <b>Saddle</b>  |  | -          | -   | -   |
| <b>19</b> | <b>Shock</b>   |  | -          | -   | -   |
| <b>20</b> | <b>Shock extension</b>                               |  | -          | -   | -   |
| <b>21</b> | <b>Shock link*</b>                                   | 1. 29 inch alloy link                          | -          | -   | -   |
|           |  | 2. 27.5 inch (mixed wheel) alloy link          | -          | -   | -   |
| <b>22</b> | <b>SWAT 3.0</b>                                      | 1. SWAT door                                   | -          | -   | -   |
|           |  | 2. SWAT door bezel, gasket, and pipeline kit   | 2.5 mm hex | 0.7 | 6   |
| <b>23</b> | <b>Water bottle cage bolts</b> (M5 x 16 mm x 0.8 mm) |  | 3 mm hex   | 2.8 | 25  |
| <b>24</b> | <b>Down tube protector</b>                           | 1. Nut (M4 x 0.7 mm)                           | -          | -   | -   |
|           |  | 2. Nut (M4 x 0.7 mm)                           | -          | -   | -   |
|           |  | 3. Forward protector bolt (M4 x 0.7 mm x 7 mm) | T25 Torx   | 2   | 18  |
|           |  | 4. Rear protector bolt (M4 x 0.7 mm x 13 mm)   | T25 Torx   | 2   | 18  |
| <b>25</b> | <b>Chainstay cable guide</b>                         |  | 2.5 mm hex | 1.5 | 13  |
| <b>26</b> | <b>Axle</b>  | 1. Front axle (fork manufacturer's guidelines) | -          | -   | -   |
|           |  | 2. Rear axle (12 mm x 148 mm)                  | 6 mm hex   | 15  | 133 |
| <b>27</b> | <b>Rear derailleur hanger</b> (SRAM UDH)             |  | 8 mm hex   | 25  | 221 |
| <b>28</b> | <b>Chainstay protector</b>                           |  | 2.5 mm hex | 2   | 18  |
| <b>29</b> | <b>Bottom bracket</b>                                |  | -          | -   | -   |
| <b>30</b> | <b>Cable binder</b> (5 mm / 3 mm)                    |  | -          | -   | -   |

\*Not all models are equipped with all the above components.

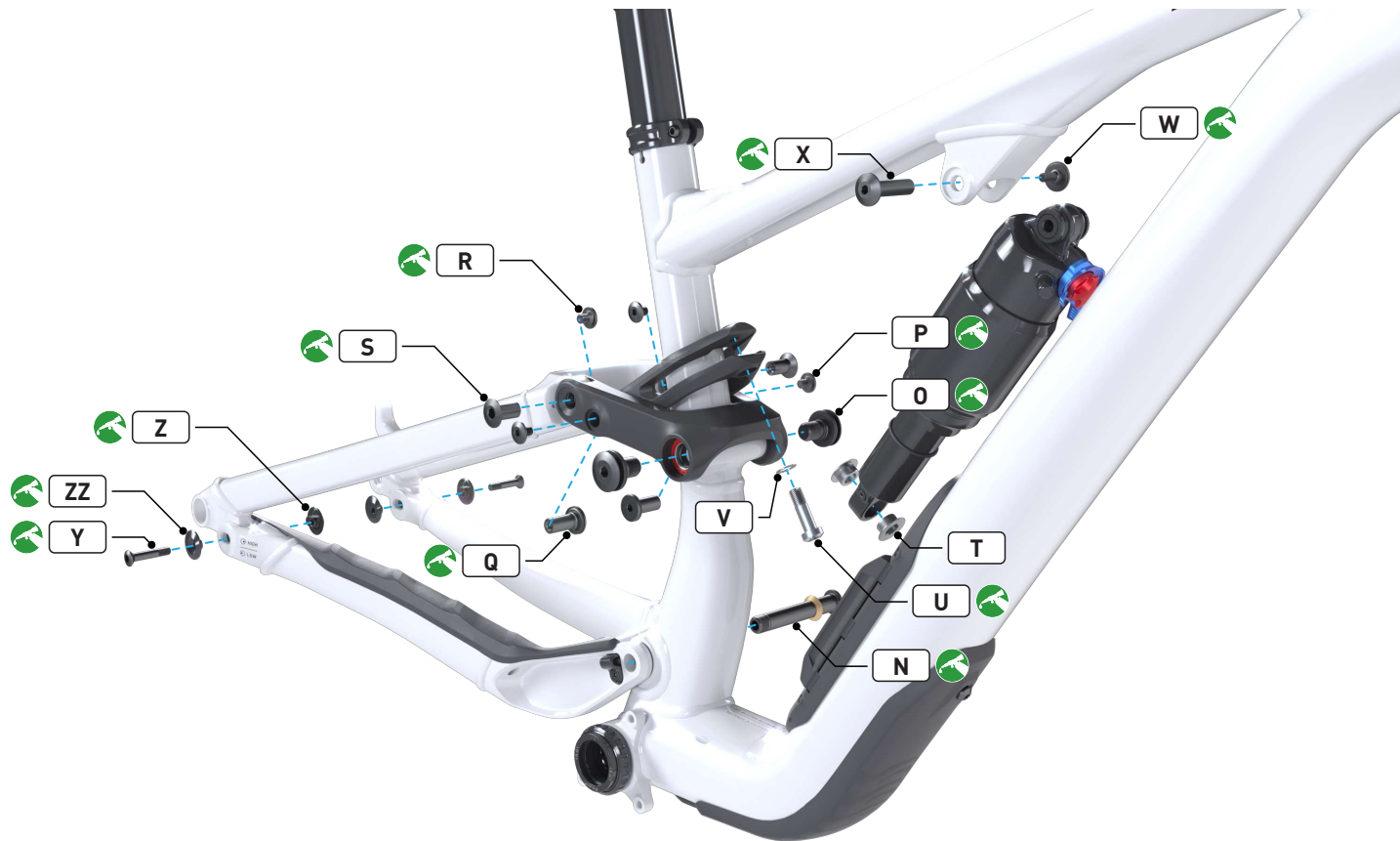
Other service parts may be found in section **7. Replacement parts and accessories**.

## 5. REAR TRIANGLE SPECIFICATIONS



## 5.1. BEARING AND SPACER SPECIFICATIONS

|          | LOCATION                        | QTY | BEARING  | DIMENSION (MM)        |
|----------|---------------------------------|-----|----------|-----------------------|
| <b>A</b> | Main pivot center spacer        | 1   | -        | 12 ID x 20 OD x 41 W  |
| <b>B</b> | Main pivot bearing              | 2   | 3802-2RS | 15 ID x 24 OD x 7 W   |
| <b>C</b> | Main pivot spacer               | 2   | -        | 12.1 ID x 23 OD x 3 W |
| <b>D</b> | Link at seat tube bearing       | 2   | 6802-2RS | 15 ID x 24 OD x 5 W   |
| <b>E</b> | Link at seat tube spacer        | 2   | -        | 12.1 ID x 21 OD x 3 W |
| <b>F</b> | Extension bearing               | 2   | 6801-2RS | 12 ID x 21 OD x 5 W   |
| <b>G</b> | Extension spacer                | 2   | -        | 10 ID x 20 OD x 3 W   |
| <b>H</b> | Link at seatstay bearing        | 2   | 6801-2RS | 12 ID x 21 OD x 5 W   |
| <b>I</b> | Link at seatstay spacer (outer) | 2   | -        | 10 ID x 20 OD x 3 W   |
| <b>J</b> | Link at seatstay spacer (inner) | 2   | -        | 10 ID x 18 OD x 3 W   |
| <b>K</b> | Horst pivot bearing             | 4   | 6801-2RS | 12 ID x 21 OD x 5 W   |
| <b>L</b> | Horst pivot spacer              | 4   | -        | 12 ID x 21 OD x 2.5 W |
| <b>M</b> | Horst pivot center spacer       | 2   | -        | 6 ID x 16 OD x 16 W   |



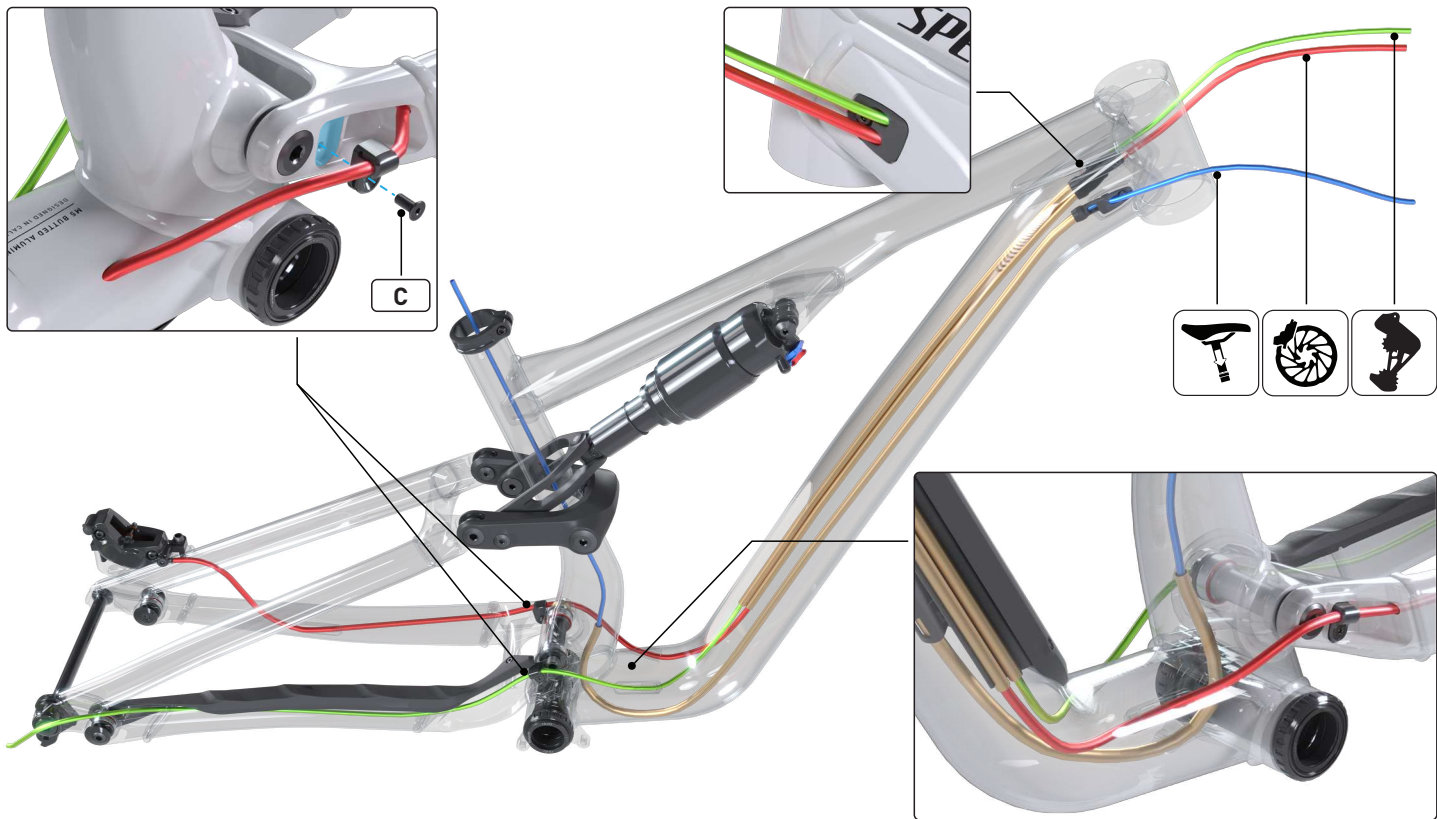
## 5.2. BOLT, AXLE, WASHER, AND FLIP CHIP SPECIFICATIONS

|           | LOCATION                              | QTY | DIMENSION (MM)           | TOOL SIZE | TORQUE |        |
|-----------|---------------------------------------|-----|--------------------------|-----------|--------|--------|
|           |                                       |     |                          |           | Nm     | in-lbf |
| <b>N</b>  | Main pivot bolt                       | 1   | M12 x 1.0 x 83           | 6 mm hex  | 20     | 177    |
| <b>O</b>  | Link at seat tube bolt                | 2   | M12 x 1.0 x 17           | 6 mm hex  | 20     | 177    |
| <b>P</b>  | Link at extension bolt                | 2   | M6 x 1.0 x 8             | 4 mm hex  | 12     | 106    |
| <b>Q</b>  | Link at extension axle                | 2   | 10 OD x 1.0 x 23         | 5 mm hex  | -      | -      |
| <b>R</b>  | Link at seatstay bolt                 | 2   | M6 x 1.0 x 8             | 4 mm hex  | 12     | 106    |
| <b>S</b>  | Link at seatstay axle                 | 2   | 6 OD x 1.0 x 19          | 6 mm hex  | -      | -      |
| <b>T</b>  | Rear shock washer                     | 2   | 8.1 ID x 19 OD x 0.6     | -         | -      | -      |
| <b>U</b>  | Rear shock mounting bolt              | 1   | M8 x 1.25 x 27           | 6 mm hex  | 20     | 177    |
| <b>V</b>  | Rear shock mounting washer            | 1   | M8, 8.4 ID x 13 OD x 0.5 | -         | -      | -      |
| <b>W</b>  | Forward shock mounting bolt           | 1   | M5 x 0.8 x 13.45         | 4 mm hex  | 5.5    | 49     |
| <b>X</b>  | Forward shock mounting axle           | 1   | 8 OD x 0.8 x 31.2        | 4 mm hex  | -      | -      |
| <b>Y</b>  | Horst pivot bolt                      | 2   | M6 x 1.0 x 32.5          | 5 mm hex  | 10     | 89     |
| <b>Z</b>  | Horst pivot flip chips (threaded)     | 2   | M6 x 1.0                 | -         | -      | -      |
| <b>ZZ</b> | Horst pivot flip chips (non-threaded) | 2   | 6 ID                     | -         | -      | -      |

## 6. CABLE ROUTING



|          | DESCRIPTION  | TOOL SIZE  | TORQUE |        |
|----------|--|------------|--------|--------|
|          |  |            | Nm     | in-lbf |
| <b>A</b> | <b>ICR guide</b> (single cable) (4mm/5mm housing) (drive side)     | 2.5 mm hex | 1.5    | 13     |
| <b>B</b> | <b>ICR guide</b> (double cable) (4mm/5mm housing) (non-drive side) | 2.5 mm hex | 1.5    | 13     |
| <b>C</b> | <b>Chainstay cable guide</b>                                       | 2.5 mm hex | 0.8    | 7      |





## 7. REPLACEMENT PARTS AND ACCESSORIES

|    | DESCRIPTION  | PART       |
|----|--|------------|
| 1  | CABLE CLIP/BINDER FOR 5MM/3MM HOUSING  | S256500001 |
| 2  | ICR GUIDE WITH BOLT (SINGLE CABLE) (4MM/5MM HOUSING)   | S216500010 |
| 3  | ICR GUIDE WITH BOLT (DOUBLE CABLE) (4MM/5MM HOUSING)   | S246500002 |
| 4  | HEADSET CUPS KIT (0 DEGREE AND +/-1 DEGREE CUPS)   | S212500015 |
| 5  | HEADSET KIT (1-1/8" UPPER / 1.5" LOWER, 45x45 DEGREE BEARINGS) (HEADSET TOP COVER 46MM (H2387)) (SPLIT CROWN RACE) | S242500004 |
| 6  | LARGE SWAT POD (270MM LENGTH)  | S229900016 |
| 7  | SWAT 3.0 DOOR  | S219900064 |
| 8  | SWAT 3.0 DOOR BEZEL AND 3 CABLE PIPELINE KIT   | S249900001 |
| 9  | SEATPOST CLAMP (38.6MM)  | S214700007 |
| 10 | SEATPOST SHIM (34.9MM OD / 30.9MM ID)  | S174900001 |
| 11 | REAR BOOST THRU-AXLE (12MM X 148MM)  | S240200001 |
| 12 | SRAM UNIVERSAL DERAILLEUR HANGER (UDH) (00.7918.089.000)   | S202600002 |
| 13 | BOLT KIT (REAR SHOCK MOUNTING HARDWARE)  | S240500003 |
| 14 | BOLT KIT (SUSPENSION PIVOT BOLTS AND SPACERS)  | S240500002 |
| 15 | BEARING KIT (SUSPENSION BEARINGS, HORST PIVOT SPACERS, AND CHAINSTAY MIDDLE SPACERS)                               | S240600002 |
| 16 | ALLOY SHOCK EXTENSION  | S246300001 |
| 17 | 29" ALLOY SHOCK LINK   | S244300003 |
| 18 | 27.5" ALLOY SHOCK LINK   | S244300001 |

|           |  |            |
|-----------|--|------------|
| <b>19</b> | SHOCK MY25 FOX, FLOAT GENIE, PERFORMANCE ELITE, 210 X 52.5MM, SJ 15 EXPERT/ELITE (SIZE S1) [972-63-264]  | S244200004 |
| <b>20</b> | SHOCK MY25 FOX, FLOAT GENIE, PERFORMANCE ELITE, 210 X 55MM, SJ 15 EXPERT/ELITE (SIZE S2-S6) [972-63-263] | S244200005 |
| <b>21</b> | CHAINSTAY CABLE GUIDE WITH BOLT FOR 4MM/5MM HOUSING  | S246500001 |
| <b>22</b> | ALLOY CHAINSTAY (12MM X 148MM) (SATIN BLACK)   | S241500002 |
| <b>23</b> | ALLOY CHAINSTAY (12MM X 148MM) (GLOSS BLACK)   | S241500001 |
| <b>24</b> | MOLDED CHAINSTAY PROTECTOR WITH BOLT   | S246900001 |
| <b>25</b> | MOLDED DOWN TUBE PROTECTOR WITH HARDWARE   | S249900012 |
| <b>26</b> | SHUTTLE GUARD PROTECTOR (ADHESIVE BACKING)   | S249900011 |
| <b>27</b> | MYLAR DOWN TUBE PROTECTOR (SIZE S1-S2)   | S249900005 |
| <b>28</b> | MYLAR DOWN TUBE PROTECTOR (SIZE S3-S4)   | S249900006 |
| <b>29</b> | MYLAR DOWN TUBE PROTECTOR (SIZE S5-S6)   | S249900007 |
| <b>30</b> | ALLOY SEATSTAY FOR 27.5" WHEELS ONLY (SIZE S1-S2) (SATIN BLACK)  | S245000002 |
| <b>31</b> | ALLOY SEATSTAY FOR 27.5" WHEELS ONLY (SIZE S1-S2) (GLOSS BLACK)  | S245000001 |
| <b>32</b> | ALLOY SEATSTAY 425MM LENGTH (SIZE S3-S4) (SATIN BLACK)   | S245000004 |
| <b>33</b> | ALLOY SEATSTAY 425MM LENGTH (SIZE S3-S4) (GLOSS BLACK)   | S245000003 |
| <b>34</b> | ALLOY SEATSTAY 434MM LENGTH (SIZE S5-S6) (SATIN BLACK)   | S245000006 |
| <b>35</b> | ALLOY SEATSTAY 434MM LENGTH (SIZE S5-S6) (GLOSS BLACK)   | S245000005 |

Specialized replacement parts, components, and accessories are available through your Authorized Specialized Retailer.

## NOTES

*SPECIALIZED*®

**SPECIALIZED BICYCLE COMPONENTS**  
15130 Concord Circle, Morgan Hill, CA 95037 (408) 779-6229